

Polling Features

- Connect directly via RS-232C or remotely via telephone modems.
- SAM4s SPS-500 Series and SPS-2000 ECRs can be polled via TCP/IP (Ethernet).
- One software package can poll multiple stores; no need for multiple licenses.
- Poll reports from the register, then save, display or print them at the PC.
- Poll all stores, or individual stores from a single licensed PC.
- Poll unattended at a predetermined time.
- Customize your polling session by defining the reports you wish to poll.
- SAM Series Software converts polled reports to CSV, ready to be used by other PC applications.

System Requirements

- Windows XP and later operating systems.
- Compatible with Windows 7 and 64 bit operating systems.
- 64 MB RAM; 150 MB minimum disk space.
- Dedicated serial port or USB to Serial adaptor.
- CD ROM drive to load software. You can also load from an SD Card or USB memory.
- VGA or SVGA display.
- USB port for software key.
- US Robotics V.92 56K external modems are recommended for modem polling applications (for both PC and ECR sites).

Optional SNBC Label Printers

The BTP-L520, BTP-L540 (shown) and the BTP-L580IIC Label Printers are essential inventory system accessories.



For item or shelf, the BTP-L540 produces direct thermal labels varying in width from 2.14" to 4".

Inventory Features

- Inventory Maintenance Function allows stock addition, transfers in/out and promo/waste tracking.
- Inventory levels can be adjusted by item, by shelf or by vendor.
- By Shelf and By Vendor Inventory Adjustment Functions allow orders to be entered, printed and suspended. Suspended orders can be recalled, adjusted if necessary and sent into inventory when the product is received.
- Vendor Information Maintenance records basic vendor data.
- Prints barcode labels.
- Records purchase history and sales history for each item.
- Parent/Child feature for inventory cases/packs that are broken down and sold as single items.

Inventory Reports

- The Minimum Inventory Level Report lists PLUs where the inventory on hand level is less than the minimum inventory level.
- The Cost Report extends the value of current inventory and calculates the projected profit margin percentage based upon the current selling price.
- The Physical Inventory By Shelf Report is a worksheet for a physical inventory. The report can be organized by shelf number and PLU number or by descriptor and PLU number.
- Sales History Reports and Purchase History Reports can be printed by date range.



Point Of Sale
Max

Serving Yakima
and the I-82
Corridor
Gary Swart
Owner

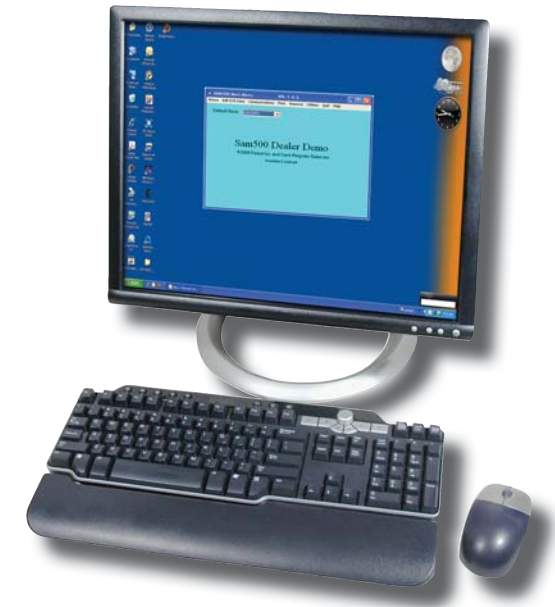
Cash Register
Sales
Service
Programming
Paper and Ink

Local: 509-453-1761 * Toll Free 877-676-9445

SAM4s

SAM Series

Polling & Inventory Software



With easy to use Windows™ based SAM Series Polling and Inventory software from CRS, you can poll your SAM4s electronic cash register and automatically update your inventory records. SAM Software provides convenient PLU file management at your personal computer, packaged with basic inventory control features and reports.

For SAM4s SPS-300 Series, SPS-500 Series and SPS-2000 ECRs

SAM Series



Polling and Inventory Software for Your SAM4S Electronic Cash Register

PLU Data Tab

An easy-to-use PLU Programming screen provides information organized with tabs and uses check boxes to select individual PLU options.

- A *Full Description* field is provided to supplement the item description that is used at the ECR.
- Calculates *Margin of Profit (%)*, based upon current cost and selling price.

Inventory Tab

- At the *Min. Level* (minimum inventory level) field you can indicate the quantity where an item should appear on the *Minimum Inventory Level Report*.
- Using the *Shelf Location* field will facilitate physical inventory verification. You can print inventory worksheets sorted by shelf location.
- *Primary* and *Secondary Vendor* fields allow you to maintain vendor contact information for each inventory item.
- The *Vendor Product ID#* is a 14-character alpha-numeric field.
- You can locate specific items by *PLU Number Lookup*, *Vendor Product ID#* or *PLU Descriptor Lookup*.
- UOM (unit of measure) field allows you to indicate the inventory unit, i.e. each, case or lb.

Barcode Tab

- Create UPC tags or labels in all popular barcode formats. Print at an optional label printer.

Inventory History Tab

You can view both the *Purchase History* and *Sales History* for each item. You can print purchase or sales history for any specified date range.